



**California Valley Miwok Tribe, California**  
(Sheep Ranch Rancheria of Me-Wuk Indians of California)  
2140 Shattuck Ave. #602, Berkeley, California 94704

{ www.californiavalleymiwok.com }

July 30, 2020

<9-FIRSTNAME> <10-MIDDLE\_NAME(S)> <  
11-LASTNAME>  
<13-STREET>  
<14-CITY>, <15-STATE> <16-ZIP>

Chadd Everone, Tribal Adm.

**U.S. Census 2020**

An inter-governmental agency known as the California Indian Man Power Consortium, Inc. (CIMC) has requested that I forward this enclosed information to the tribal members. Velma WhiteBear is an executive in CIMC, and she referred her agency to me. The Census Form is not in this packet. It is simply explanatory information and seeks to encourage all Native Americans to complete the Census because Federal fund are allocated in a manner related to the number submitted. If you have already received, completed, and mail your Census or have been interviewed by a pollster who completed it for you, then you can discard this letter and information packet. If you have not yet and want to enter it via the Internet, then here are some instructions, which I think are pretty accurate.

Only one persons in your residence should complete the Form for all. Different people for the same residence should not file separately. The residence is the bench mark. In advance, you will need: your residential address including zip code and birth dates of all who are being included in your filing.

Your filing is fairly urgent as there is some political tussle over the dead-lines - Republicans seem to want to shorten the time and Democrats want to extend it.

For Internet filing go to: <https://2020census.gov/en.html>

The government opens with this statement: "You can choose to respond online, by phone, or by mail. Respond today. The census helps shape many different aspects of your community. Everyone is counted. Your Privacy Matters. Everyone Is Counted. Your Response Is Required. Shape Your Future."

Once you start, you must complete. If there are mistakes, then it lets you correct at intervals. If you did make an minor error, that is fine. It is not a legal document. Proceed as follows:

For Internet filing go to:

<https://2020census.gov/en.html>

Select "Respond" Button.

Select "Start Questionnaire"

If you have a 12 digit Census ID, the fill in the slots and Select "Login". If you do not, then Select "If you do not have a Census ID, click here."

Select the button for "A U.S. state or the District of Columbia" and then select the "arrow" button.

Enter your "Address Number" "Street Name", "Apt", "City", "State", "Zip" then select the "arrow" button.

If correct, then select "Submit"

Next, enter "First Name" "Middle Name" "Last Name" "Telephone Number" and select the "arrow" button.

Now you will be asked some questions. Select "Start" button

Number of people including self living at the address. Enter the name of each other person living at the address. "+ Add another person" if relevant; then select the "arrow" button

You will be given the opportunity to include omissions which you forgot. If "Yes" select that; if "No" select that. Then select the "arrow" button.

(The reference date is April 1, 2020, there are various questions about owing or renting the location.) Then select the "arrow" button. (If you do not make an entry it will not let you pass until you do.)

It asks you to verify the persons living at the location. Select each person and then select the "arrow" button

You will see a screen that show you if you completed the Household Questions. Then select the "Start" button. It will ask you questions about each person then select the "Start" button.

When finished, you will get a confirmation number which you can save or not.

For example, Confirmation #:

63fbd64c-fbbb-4cdd-9ef8-766cc40f79b9

The Census is complete. Exit your browser.

Chadd



California Indian Manpower Consortium, Inc.  
*The CIMC Movement: Creating Positive Change for Native Communities*

July 17, 2020

Mr. Chadd Everone  
California Valley Miwok Tribe  
2140 Shattuck Avenue, #602  
Berkeley, California 94704

Dear Mr. Everone:

In an effort to ensure all Native communities receive information on the importance of responding to Census 2020, California Indian Manpower Consortium, Inc. (CIMC) has been conducting outreach in coordination with a number of partner organizations and tribes. As part of this outreach process, CIMC has prepared Census 2020 informational packets to be delivered to your members. Packets are ready for mailing once labels and appropriate postage are affixed. If needed, reimbursement of postage expenses is available. We respectfully request you to share these packets with your members.

In addition, we are contacting you to clarify some information that may have not been clearly communicated by the US Census Bureau regarding the unique Census identification code. This 12-digit number is provided on the Census Bureau invitation to respond and the additional reminder letters that have been received or will be received at each residence in the mail. *It is important for each Native household to respond using this number to ensure that the Native household's geographic location is confirmed so that every community receives appropriate federal funding for vital tribal and community programs.* Further, many households may have not received their census materials due to residing in an Update Leave area (where mail is not received at the residence); the U.S. Census Bureau is in the process of delivering census materials to these households at this time.

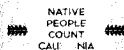
Should you need additional information, please contact me or Ms. Teresa Marie Willson, Complete Count Facilitator, at (916) 920-0285.

Sincerely,

Lorenda T. Sanchez  
Executive Director

Enclosures

1-L-062-PY20



# Census 2020

## NATIVE PEOPLE COUNT CALIFORNIA

### WHEN

The United States Constitution mandates that everyone in the country be counted every 10 years. Starting in 1790, the very first census was implemented and has continued over the last 230 years. Census Day 2020 is April 1, 2020.

### WHO

The Census counts every person in every household living in the United States once, and only once in the right place or location.

### IMPACT

Every 10 years, the results of the census are used to determine representation of seats in Congress. After each decade's census, state officials redraw the boundaries of the congressional and state legislative districts in their states to account for population shifts.

In total, there is about **\$675 billion** in federal funds distribution, grants and support to states, counties, and communities that is based on census data. That money is spent on schools, hospitals, roads, public works and other vital programs. Local governments use the census for public safety and emergency preparedness and businesses use census data to decide where to build factories, offices and stores that create jobs.

### HOW

For the first time in history, the Census 2020 Questionnaire can be completed using one of the following three methods:

#### ONLINE

Internet Self-Response.

#### PHONE



Telephone Census questionnaire assistance.

#### PAPER

Paper Census questionnaire option that is sent by mail.

13 Languages will be supported on (Internet & Phone).

### SECURITY

Your information is secure. By law (Title 13, U.S. Code), the U.S. Census Bureau cannot share an individual's answers with anyone or allow it to be used to determine their eligibility for government benefits.



Updated MAY 20, 2020

# Census During COVID-19 Pandemic NATIVE FACT SHEET

2020 CENSUS SELF-RESPONSE DEADLINE: OCTOBER 31, 2020

## General information &

## Timeline/Important Deadlines

- The 2020 Census is still happening now.
- The new self-response time deadline is October 31.
- We understand that our rural tribal communities are heavily impacted by COVID-19 and have different needs from community-to-community.
- The California Complete Count Office has the following recommendations to ensure a Native Complete Count in the 2020 Census, while also respecting the inherent sovereign rights of tribes to make the best decisions for your communities.

*U.S. Census Bureau Recommendations for Native communities regarding Census self-response during COVID-19*

### ***Please wait to respond until you receive your Census materials.\****

In your tribal area, the best way to respond is with the unique Census ID we provide. When you receive your materials, you can choose to:

- Complete and mail back the enclosed paper questionnaire.
- Call to respond using your Census ID.
- Respond online using your Census ID.

If filling out the form online, make sure that when you select Head of Household as a American Indian/Alaska Native household that it does not switch the head of household when you respond to the question "Who is responsible for paying the rent/mortgage?"

The independent tribal government self-enumeration option presented in April is specific to a tribal government comparative numbers and DOES NOT get included in the 2020 Census report or coded numbers.

The data from those who have completed the Census online without the unique user ID still remains in the Census data base and will be counted as demographic data. The U.S. Census Bureau is working to match those completed questionnaires with the correct addresses. But a Census enumerator might still visit once Update Leave commences later this year.

\* Please check with your tribe and/or local Complete Count Committee for specific tribal or local recommendations.



# NATIVE PEOPLE COUNT CALIFORNIA

## Census During COVID-19 NATIVE FACT SHEET

### What is Census?

Every 10 years, the United States counts everyone living in the country on April 1. Our tribes do not share enrollment numbers with the government, so it is important for all California Tribal Nations and Native communities to participate in Census 2020.

### UPDATED TIMELINE

Timeline of events for the 2020 Census in California.

Census notices are mailed to households.

Census takers visit each household to update address lists and collect information on the questionnaire during "Update Leave"

### Why is Census important for California Tribal Nations and Native Communities?

Census 2020 is an opportunity to **provide a better future for our communities and future generations**. Your responses to Census 2020 can help **shape how billions of dollars in federal funds are distributed** each year for programs and grants in Native communities.

An accurate count for California Tribal Nations and Native communities means **fair access to resources** and fair representation in local, state, and federal elected offices. **The Native Vote has increasingly become a "swing vote" in several states, and answering the Census 2020 ensures that your vote may make a difference.**

There are **more than 70 programs that benefit the State of California** that use Census numbers to allocate funding including education, health, and human services **that directly impact California's Tribal Nations and Native communities.**

By law, the Census Bureau delivers population counts to the President for apportionment of congressional seats.

Census takers visit households that have not completed the questionnaire in Nonresponse Followup (NRFU)

By law, the Census Bureau completes delivery of redistricting data to states.

As many of our Tribal Nations and Native communities live in rural areas without traditional addresses. The U.S. Census Bureau (USCB) employs Census takers who visit our communities to "Update" addresses and "Leave" a Census packet. During COVID-19, the USCB is prioritizing the health and safety of their employees and our communities. Update Leave is scheduled to commence under the guidelines of each state and Tribal Nation's guidance. In addition, USCB employees will be outfitted with personal protective equipment, and will not be actively engaging in-person, but will be leaving Census packets for completion instead at front doors.



# CENSUS 2020 QUESTIONNAIRE TIPS RACE & TRIBAL AFFILIATION

**The only way to ensure  
that you are included in all  
the Census counts as AI/AN  
is to check just that ONE  
box on the form.**

To be counted as an AI/AN household depends entirely on the race of "Person 1" - the first person listed on the Census 2020 questionnaire. If Person 1 says that he or she is AI/AN, then the household is counted as having an AI/AN householder.

Check the box on  
to indicate that you are American Indian or Alaska Native  
on the Census 2020 questionnaire. Checking the box  
is a matter of self-identification. No proof is required.  
No one will ask you to show a tribal enrollment card or a  
Certificate of Degree of Indian Blood (CDIB).

American Indian or Alaska Native - Print name of enrolled or  
principal tribe(s), for example, *Navajo Nation, Blackfeet Tribe,*  
*Mayan, Aztec, Native Village of Barrow Inupiat Traditional*  
*Government, Nome Eskimo Community, etc.* ➔

Make sure to write in the full name of your enrolled or  
principal tribe(s) if applicable, even if it takes up more  
than the space provided.

*To ensure the inclusion of your Tribe, Band, or Community  
in the Census, please ensure you are accurately counted.*

**Important Note: Tribal enrollment, and the right to determine  
the citizenship or membership of a tribe, is a fundamental  
right of tribal sovereignty and is not determined by the  
U.S. Census Bureau.**

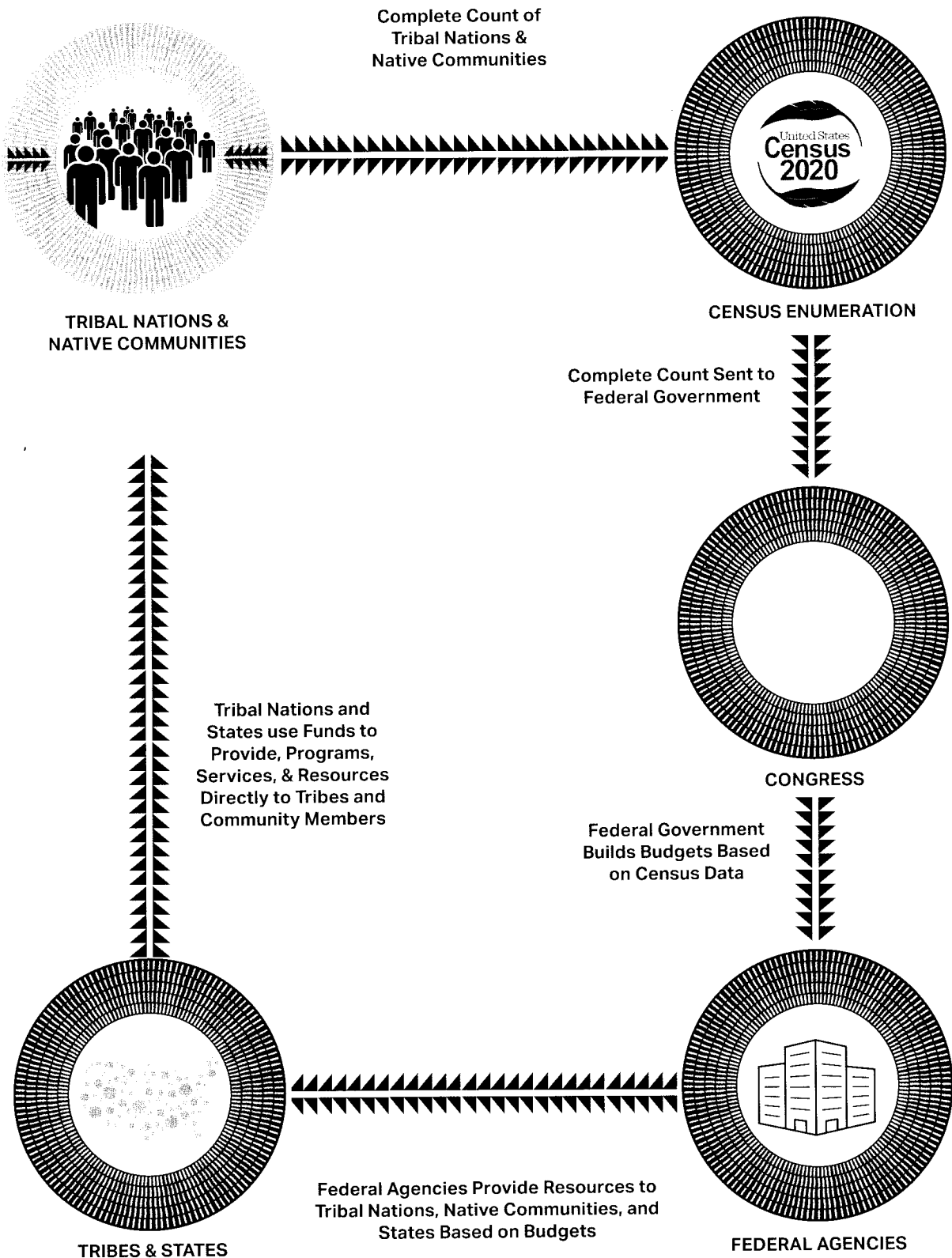
The option to check off multiple  
races means that an AI/AN person  
can identify as both Native and as  
a member of another race, such as  
white, Black, or Asian.

If you check the box for AI/AN, and  
do not check other boxes on the race  
question, you will be counted in the  
"American Indian Alone" category in  
analyses of Census data.

If you check the box for American  
Indian or Alaska Native and check one  
or more races, you will be counted  
in the "American Indian Alone or in  
Combination" category in analyses of  
Census data.

For more information on the Census  
2020 Question on Race, visit <https://www.census.gov/race>.

# CENSUS TRIBAL IMPACT







#NativePeopleCount  
#CACensus2020  
#Census2020

California Indian Manpower  
Consortium, Inc.

[www.cimcinc.org/NativePeopleCount.html](http://www.cimcinc.org/NativePeopleCount.html)

## Did You Know?

- Census data is the basis for over \$1 billion dollars that annually flows into Indian Country to build tribal housing and make improvements, maintain and construct roads, and provide employment and training programs.
- American Indians and Alaska Natives historically have experienced some of the **highest Census undercount rates** of any population in the U.S.
- American Indians were generally **not counted up until 1890** and then substantially undercounted until about 1980 when all U.S. residents were allowed to indicate their own race rather than having it determined by a census enumerator.
- Census answers are **private and confidential**: by law, the Census Bureau cannot share an individual's or a household's answers with any person or agency, e.g. not the IRS, not law enforcement entities, nor tribal housing authorities.

Source: NCAI Indian Country Counts

## CENSUS DAY: APRIL 1, 2020

# How to Be Counted as American Indian or Alaska Native in the 2020 Census

**Selecting American Indian or Alaska Native (AI/AN) on the 2020 census form is a matter of self-identification.** No proof is required. No one will ask you to show a tribal enrollment card or a Certificate of Degree of Indian Blood (CDIB).

**Householder Question** - Whether a household is counted as an AI/AN household depends entirely on the race of "Person 1" the first person listed on the census form. If that person says he or she is AI/AN, then the household will be counted as one with an AI/AN "householder."

**Option to Check Multiple Race Boxes** - The option to check off multiple races means that an AI/AN person can identify as both Native and as a member of another race, such as white, Black or Asian.

- If the person checks off only the AI/AN box on the form, the person counts as **AI/AN "Alone"** meaning that this is the person's only race. If the person checks the AI/AN box and one or more boxes for another race, the person is included in the count as **AI/AN "Alone or in Combination"** (with one or more other races.)
- The Census Bureau does publish information on the "Alone or in Combination" population. However, many standard profiles of the population lump those who check AI/AN and another racial group into a single category as "Two or More Races," along with all non-Indians who also report multiple races.



#NativePeopleCount  
#CACensus2020  
#Census2020

*The only way to ensure that you are included in all the counts as American Indian or Alaska Native is to check just that ONE box on the form.*

Source: NCAI Indian Country Counts



California Indian Manpower Consortium, Inc.  
[www.cimcinc.org/NativePeopleCount.html](http://www.cimcinc.org/NativePeopleCount.html)

**CENSUS DAY: APRIL 1, 2020**



# Respond When You Receive Your 2020 Census Invitation

If your tribal area hasn't received census materials yet, we will deliver them soon. Please respond when you receive yours.

## Why haven't I received a census invitation yet?

We determined in collaboration with your tribal leaders that having census workers drop off census materials in some areas is the best way to count people living on your tribal lands. COVID-19 delayed delivery to your area.

## Can I respond now?

Please wait to respond until you receive your census materials.

In your tribal area, the best way to respond is with the unique Census ID we provide. When you receive your materials, you can choose to:

- Complete and mail back the enclosed paper questionnaire.
- Call to respond using your Census ID.
- Respond online using your Census ID.

## What if I've already responded?

We're working to match the address you provided to our address list, but we may need to visit you later.

If we can't match your address, census takers may visit to verify the address you provided and may visit to collect your responses in person. We want to ensure we count everyone in the right place.

Connect with us  
@uscensusbureau

For more information:  
**2020CENSUS.GOV**

DHS-GF-EN-015

**Shape  
our future**  
**START HERE >**



### **Will I have time to respond before the census ends?**

We've extended the deadline to respond. Census workers will drop off census materials soon, and you'll have plenty of time to respond with your Census ID.

If you don't respond when you receive your Census ID, a census taker will visit later to collect your responses in person.

### **Why can't you mail me the census information?**

The census counts people where they live. Many households in your tribal area don't receive mail at their home's physical location.

To make sure we reach everyone, census workers will:

- Canvass the area for places people might live.
- Use a laptop to update our address list.
- Link a census questionnaire to your home's physical location and leave it at your front door.

### **Why can't I respond now without my Census ID?**

Responding with your Census ID ensures you are counted in the right place.

For 95 percent of the country, we can link responses to the right place by using a mailing address. This doesn't work in some communities. For example:

- Some tribal areas don't use addresses like "101 Main Street." If a household responds with just a description of their home's location, it may not be specific enough to count them in the right place.
- If the post office delivers your mail to a PO Box, we can't count you at the post office or follow up with you there if you don't respond.
- Rural route addresses (e.g., RR5, Box 9) represent a mailbox along a roadside, not necessarily your home's location, making it harder to count you in the right place.

### **How can I track my community's response?**

View our interactive 2020 Census Response Rate map at <https://2020census.gov/en/response-rates.html>.

### **When will you drop off the materials?**

The Census Bureau is resuming dropping off materials on a phased schedule across the country. We are working with your tribal leaders to determine when to deliver to your reservation. Delivering materials does not require interaction with households, and census workers will follow the most current health and safety guidelines. Also, wherever possible, we are hiring tribal citizens as census workers.

Find the latest updates at <https://2020census.gov/en/news-events/operational-adjustments-covid-19.html>.

Connect with us  
**@uscensusbureau**  
For more information:  
**2020CENSUS.GOV**  
D-PS-GT-21-021

**Shape  
our future  
START HERE >**



# CIMC CALIFORNIA COMPLETE COUNT CENSUS 2020 PROJECT



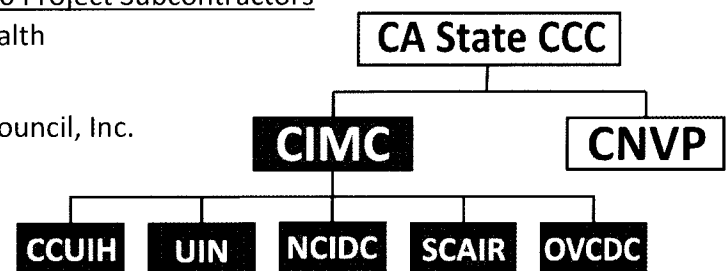
In an effort to dedicate targeted funding and resources toward statewide outreach to hard-to-count Native American and tribal communities in California, the California Complete Count Census 2020 Office awarded funding to two Native American community-based organization: **California Indian Manpower Consortium, Inc. (CIMC)** and **California Native Vote Project (CNVP)**.



Through a partnership with its subcontractors, and collaboration with a number of California tribes, CIMC will achieve the key objectives to **Educate, Motivate** and **Activate** Native Americans in California to respond to the decennial 2020 census. Each subcontract partner has an established statewide Native American network and an ongoing presence at Native community events and meetings. Each of the collaborating tribes exercises its sovereign rights and responsibilities to maintain their tribal lands and citizens' wellbeing. Together we are committed to effectively promote the message of a complete count via internet self-response, telephone assistance, or paper questionnaire.

## CIMC California Complete Count – Census 2020 Project Subcontractors

- California Consortium for Urban Indian Health
- United Indian Nations, Inc.
- Northern California Indian Development Council, Inc.
- Southern California American Indian Resource Center, Inc.
- Owens Valley Career Development Center



California Indian Manpower Consortium, Inc.  
738 North Market Boulevard  
Sacramento, California 95834  
(916) 920-0285 | [www.cimcinc.org](http://www.cimcinc.org)

## Census Day: April 1, 2020



California Indian Manpower Consortium, Inc.  
 738 North Market Boulevard, Sacramento, California 95834  
 (916) 920-0285 | [www.cimcinc.org](http://www.cimcinc.org)

**Census Day: April 1, 2020**



## California Complete Count - Census 2020



- **Why Is It Important for Tribal Community Members to Respond to the 2020 Census?**
- **What is the State Doing to Support a Complete and Accurate Count in 2020?**
- **How is Personal Information Protected?**

### **Why Is It Important for Tribal Community Members to Respond to the 2020 Census?**

The information collected by the Census is an important tool for federal and tribal decision-making.

The U.S. Constitution requires a Census every 10 years to determine how many seats each state will have in the U.S. House of Representatives. The next enumeration will be April 1, 2020, and will be the first to rely heavily on online responses.

A primary and perpetual problem facing the U.S. Census Bureau is the undercount of certain population groups. Historically, Native Americans are one of the most undercounted groups of any population in the U.S. Census, and California is home to the largest percentage of Census respondents who identify as American Indian or Alaska Native. Other undercounted communities include foreign-born residents, undocumented residents, non-white residents, renters, and children under five years old, especially those younger than one-year-old.

Census data also help guide how billions of dollars in federal, state, and tribal funding are distributed. Accurate census data leads to fairer allocations of funds that support tribal programs in meeting community member needs. Census data help tribal leaders understand what their communities need. Many tribal communities use Census information to attract new business and plan for growth. However, if some segments of the Tribal population do not respond to the Census, the California's Native American population could be underrepresented. An accurate count of Native Americans in California means fair access to resources and fair representation.



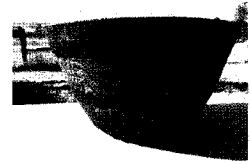
### **CALIFORNIA COMPLETE COUNT – CENSUS 2020**

[census.ca.gov](https://census.ca.gov) | [info@census.ca.gov](mailto:info@census.ca.gov)  
[@CACompleteCount](https://twitter.com/CACompleteCount)

Fact: Federal funding for Native American schools and education programs, workforce programs, health programs, housing programs, water and sewage projects, roads and economic development are based on data collected by the Census Bureau every ten years.

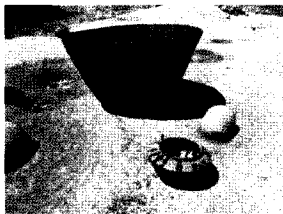
## What is the State Doing to Support a Complete and Accurate Count?

A complete and accurate count of California's population, including its diverse Native American communities, is essential to the State. More than 70 federal programs that benefit California, including education, health, and human services, use Census numbers as part of their funding formulas.



Governor Brown issued an Executive Order (B-49-18) describing California's Census 2020 initiative. The State's initial outreach strategy in 2018 includes three regional Tribal Consultations to share information and hear from California Native American Tribes about how the State can collaborate with tribes in its Census outreach, education, and resource-deployment strategies to best serve tribal communities.

Additionally, in support of the overall Census Outreach Strategy, the Governor created an advisory committee, the California Complete Count Committee. The California Complete Count Committee is a panel of community leaders from across the State working to implement strategies that will increase the count of all Californians, especially those that are hard to count.

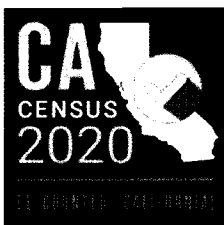


## How is Personal Information Protected?

The Census Bureau respects the privacy of people who answer the Census and is bound by strict confidentiality requirements. The Census Bureau cannot share the answers it receives with anyone, including welfare agencies, U.S. Citizen and Immigration Services (formerly known as the U.S. Immigration and Naturalization Service), the Internal Revenue Service, the Bureau of Indian Affairs, tribal officials, tribal courts, tribal police, or the military. Census employees take an oath of nondisclosure and are sworn for life to protect all information that could identify individuals. Anyone who breaks this law can receive up to five years in prison, a \$250,000 fine, or both.

The Census Bureau also uses technology to protect your information through many security measures, including electronic barriers and encryption devices. Data from an individual are combined with other data to produce the statistical summaries that are published. The Census Bureau does not produce data that can identify any individual.

Mission: Ensure that Californians get their fair share of federal resources and Congressional representation by encouraging the full participation of all Californians in Census 2020



Kayla Olvera Hilario, Tribal Affairs Specialist  
California Complete Count – Census 2020  
California Government Operations Agency  
916-365-5790  
[Kayla.Hilario@census.ca.gov](mailto:Kayla.Hilario@census.ca.gov)



**CALIFORNIA COMPLETE COUNT – CENSUS 2020**  
[census.ca.gov](https://census.ca.gov) | [info@census.ca.gov](mailto:info@census.ca.gov)  
[@CACompleteCount](https://twitter.com/CACompleteCount)



# The 2020 Census and Confidentiality

*Your responses to the 2020 Census are safe, secure, and protected by federal law. Your answers can only be used to produce statistics—they cannot be used against you in any way. By law, all responses to U.S. Census Bureau household and business surveys are kept completely confidential.*

## Respond to the 2020 Census to shape the future.

Responding to the census helps communities get the funding they need and helps businesses make data-driven decisions that grow the economy. Census data impact our daily lives, informing important decisions about funding for services and infrastructure in your community, including health care, senior centers, jobs, political representation, roads, schools, and businesses. More than \$675 billion in federal funding flows back to states and local communities each year based on census data.



## Your census responses are safe and secure.

The Census Bureau is required by law to protect any personal information we collect and keep it strictly confidential. The Census Bureau can only use your answers to produce statistics. In fact, every Census Bureau employee takes an oath to protect your personal information for life. Your answers cannot be used for law enforcement purposes or to determine your personal eligibility for government benefits.

## By law, your responses cannot be used against you.

By law, your census responses cannot be used against you by any government agency or court in any way—not by the Federal Bureau of Investigation (FBI), not by the Central Intelligence Agency (CIA), not by the Department of Homeland Security (DHS), and not by U.S. Immigration and Customs Enforcement (ICE). The law requires the Census Bureau to keep your information confidential and use your responses only to produce statistics.



## The law is clear—no personal information can be shared.

Under Title 13 of the U.S. Code, the Census Bureau cannot release any identifiable information about individuals, households, or businesses, even to law enforcement agencies.

The law states that the information collected may only be used for statistical purposes and no other purpose.

To support historical research, Title 44 of the U.S. Code allows the National Archives and Records Administration to release census records only after 72 years.

All Census Bureau staff take a lifetime oath to protect your personal information, and any violation comes with a penalty of up to \$250,000 and/or up to 5 years in prison.

## **There are no exceptions.**

The law requires the Census Bureau to keep everyone's information confidential. By law, your responses cannot be used against you by any government agency or court in any way. The Census Bureau will not share an individual's responses with immigration enforcement agencies, law enforcement agencies, or allow that information to be used to determine eligibility for government benefits. Title 13 makes it very clear that the data we collect can only be used for statistical purposes—we cannot allow it to be used for anything else, including law enforcement.

## **It's your choice: you can respond securely online, by mail, or by phone.**

You will have the option of responding online, by mail, or by phone. Households that don't respond in one of these ways will be visited by a census taker to collect the information in person. Regardless of how you respond, your personal information is protected by law.

## **Your online responses are safe from hacking and other cyberthreats.**

The Census Bureau takes strong precautions to keep online responses secure. All data submitted online are encrypted to protect personal privacy, and our cybersecurity program meets the highest and most recent standards for protecting personal information. Once the data are received, they are no longer online. From the moment the Census Bureau collects responses, our focus and legal obligation is to keep them safe.

## **We are committed to confidentiality.**

At the U.S. Census Bureau, we are absolutely committed to keeping your responses confidential. This commitment means it is safe to provide your answers and know that they will only be used to paint a statistical portrait of our nation and communities.

Learn more about the Census Bureau's data protection and privacy program at [www.census.gov/privacy](http://www.census.gov/privacy).



## **Laws protecting personal census information have withstood challenges.**

In 1982, the U.S. Supreme Court confirmed that even addresses are confidential and cannot be disclosed through legal discovery or the Freedom of Information Act (FOIA). In 2010, the U.S. Justice Department determined that the Patriot Act does not override the law that protects the confidentiality of individual census responses. No court of law can subpoena census responses.

# Counting Young Children in the 2020 Census

## Counting everyone once, only once, and in the right place

An estimated 5 percent of kids under the age of 5 weren't counted in the 2010 Census. That's about 1 million young children, the highest of any age group.

We need your help closing this gap in the 2020 Census. Here's what our research tells us about why young children are missed and what you can do to help make sure they are counted.



### Common situations where young children aren't counted

### How you can help?



The **child splits time between two homes**.

The child lives or stays with **another family or with another relative such as a grandparent**.

- Emphasize that the census counts **everyone where they live and sleep** most of the time, even if the living arrangement is temporary or the parents of the child do not live there.
- If the child truly spends equal amounts of time between two homes, count them where they stayed on **Census Day, April 1**. Coordinate with the other parent or caregiver, if possible, so the child is not counted at both homes.
- If it's not clear where the child lives or sleeps most of the time, count them where they stayed on Census Day, April 1.



The child lives in a **lower income household**.

- Explain to service providers and families that responding to the census helps determine **\$675 billion in local funding** for programs such as food stamps (also called the Supplemental Nutritional Assistance Program or SNAP), the National School Lunch Program, and the Children's Health Insurance Program (CHIP). When children are missed in the census, these programs miss out on funding that is based on the number of children counted.



The child lives in a household with **young parents or a young, single mom**.

- Explain that filling out the census yourself, on your own schedule, is easier than having to respond when a census worker knocks on your door. Remind these households that the form should **only take about 10 minutes** to fill out and can be done online or over the phone, in addition to mailing it back.
- Encourage moms with young children to ask other household members to count them and their children on the form if others live in the household.



The child is a **newborn**.

- Emphasize that parents should **include babies** on census forms, even if they are still in the hospital on April 1.
- **Encourage facilities** providing services to newborns to remind parents about the importance of counting their children on the census form.
- Highlight the fact that the census form only takes about 10 minutes to complete, and parents can **fill it out online or over the phone in addition to paper** at a time that works best for them.

## Common situations where young children aren't counted

## How you can help?



The child lives in a household that is **large, multigenerational, or includes extended or multiple families**.

- Remind the person filling out the form to count all children, including nonrelatives and children with no other place to live, even if they are only living at the address temporarily on April 1.
- Spread the word that the census **counts all people living or staying** at an address, not just the person or family who owns or rents the property.



The child lives in a household that **rents or recently moved**.

- Encourage renters and recent movers to complete their census forms **online or over the phone**, right away. That way they don't need to worry about paper forms getting lost in the move.
- **Focus efforts** on multiunit buildings that are likely to have renters.



The child lives in a household where they're **not supposed to be**, for one reason or another.

- Please explain to those that have children living in places where they aren't allowed (for example, grandparents in a seniors-only residence that have a grandchild living with them, a family with more people, including children, than the lease allows) that they should include the children because the **Census Bureau does not share information** so it can't be used against them.
- Emphasize the Census Bureau's legal commitment to keep census **responses confidential**.
- Explain that the Census Bureau **will never share information** with immigration enforcement agencies like Immigration and Customs Enforcement (ICE), law enforcement agencies like the police or Federal Bureau of Investigation (FBI), or allow this information to be used to determine eligibility for government benefits.



The child lives in a **non-English or limited-English speaking** household.

- **Conduct outreach** and create resources in non-English languages that highlight the importance of counting young children.
- **Encourage non-English speakers to self-respond** to the census and let them know that for the 2020 Census, the online form and telephone line will be available in 13 languages, including English. Language guides will be available in 59 languages other than English.



The child lives in a household of **recent immigrants or foreign-born adults**.

- Work with community members to conduct outreach in neighborhoods with recent immigrants. **Focus efforts** on the **community's gathering places** like local grocery stores, places of worship, and small restaurants.
- Emphasize the **Census Bureau's legal commitment** to keep census responses confidential. Explain that the Census Bureau will never share information with immigration enforcement agencies like Immigration and Customs Enforcement (ICE), law enforcement agencies like the police or Federal Bureau of Investigation (FBI), or allow this information to be used to determine eligibility for government benefits.